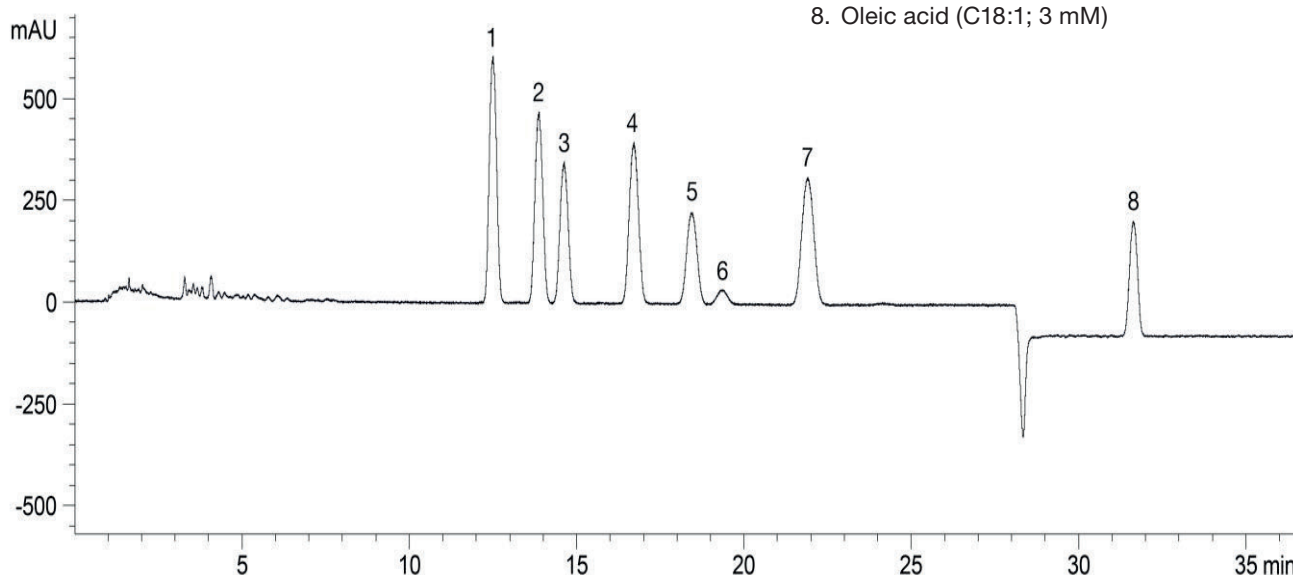


Application Note



Omega Fatty Acid Isomers

1. Eicosapentaenoic acid (C20:5; 0.5 mM)
2. Alpha-Linolenic acid (C18:3 α ; 0.5 mM)
3. Gamma-Linolenic acid (C18:3 γ ; 0.5 mM)
4. Docosahexaenoic acid (C22:6; 0.5 mM)
5. Palmitoleic acid (C16:1; 3 mM)
6. Arachidonic acid (C20:4; 0.5 mM)
7. Linoleic acid (C18:2; 0.5 mM)
8. Oleic acid (C18:1; 3 mM)



Column: YMC-Triart C18 ExRS (3 μ m, 8 nm) 150 \times 4.6 mm ID
Part No.: TAR08S03-1546PTH
Eluent: A) A: H₂O + 0.5 % H₃CCOOH
B) ACN + 0.5 % H₃CCOOH
Gradient:

Time [min]	% B
0	76.5
2	78.5
27	78.5
27.1	90
35	90

Flow rate: 1 mL/min
Temperature: 35 °C
Detection: UV at 254 nm
Injection: 20 μ L